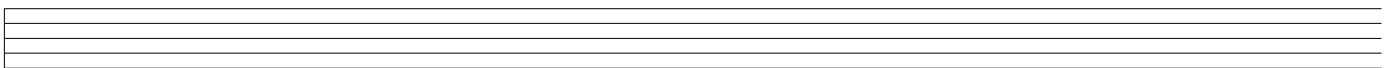
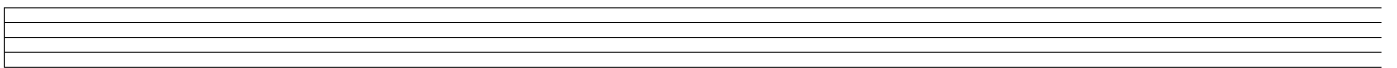
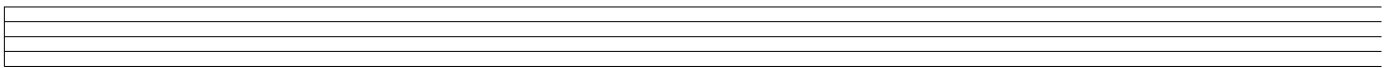
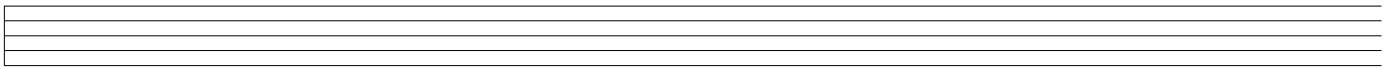
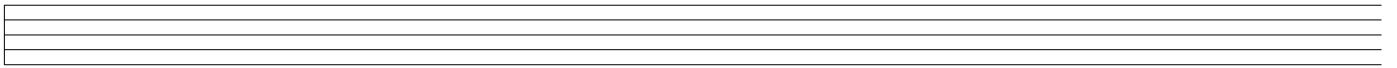
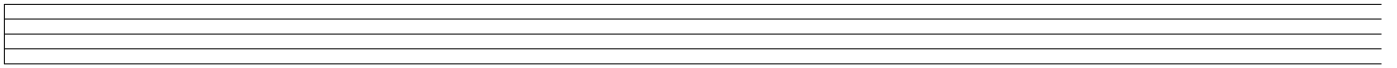
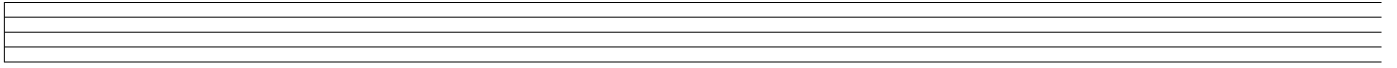
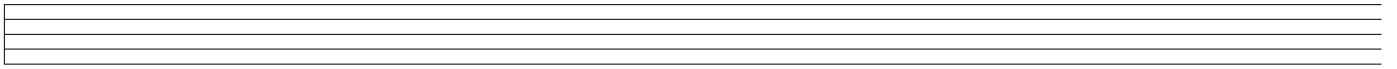
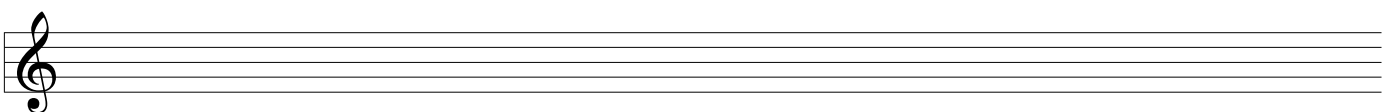
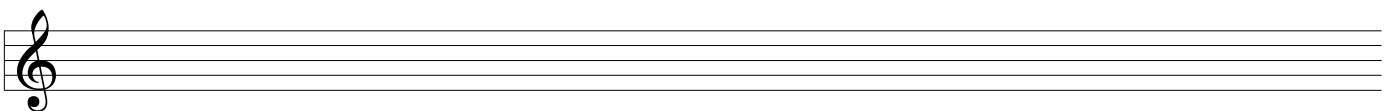
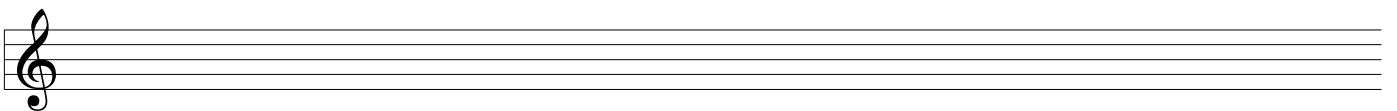
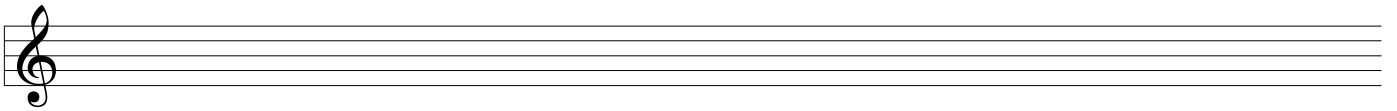
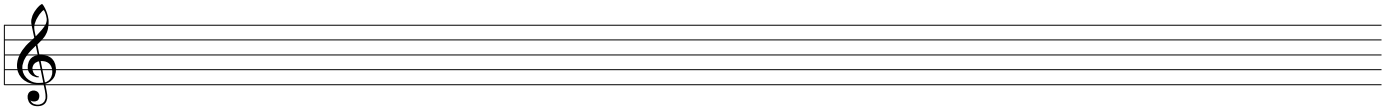
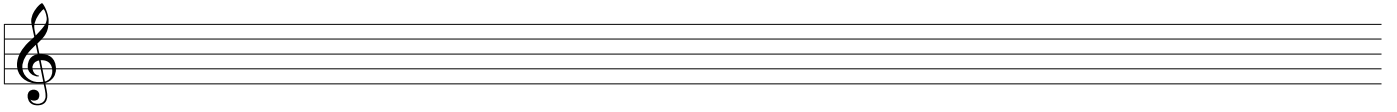
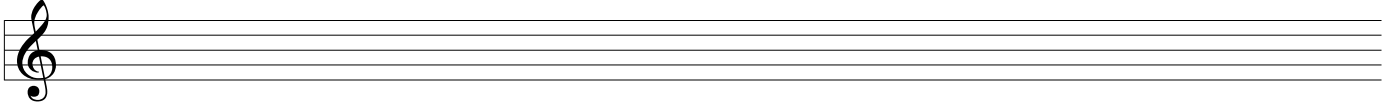
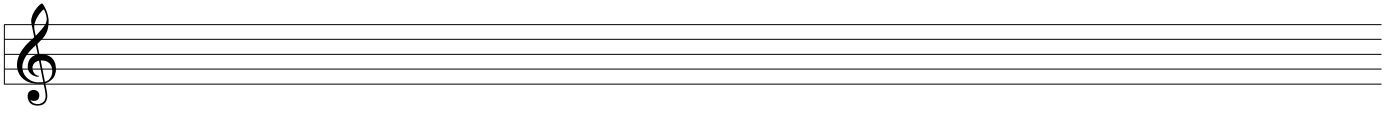
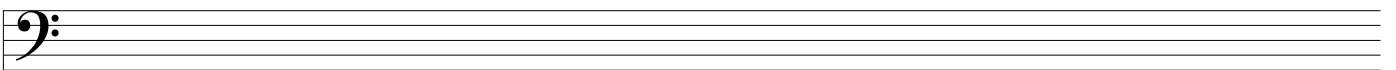
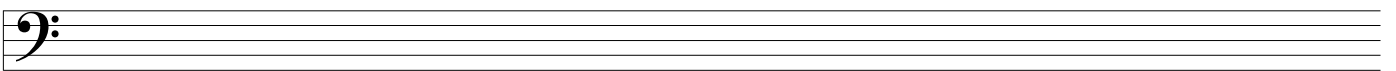
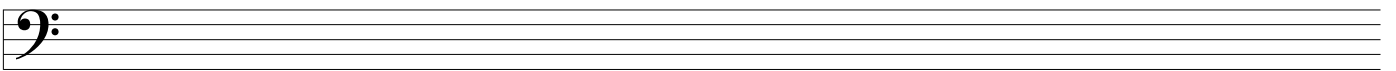
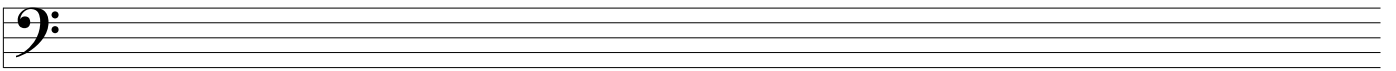
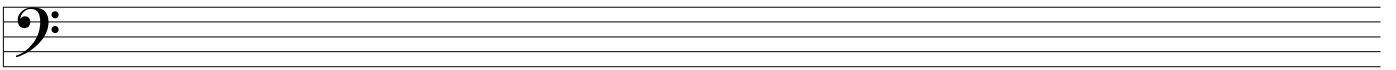
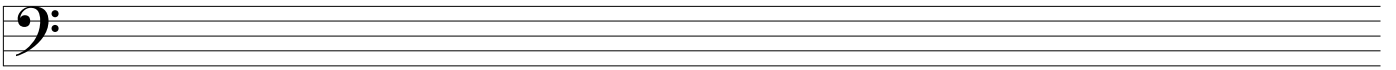
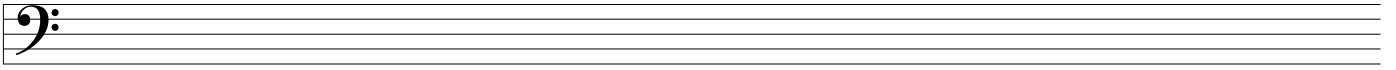
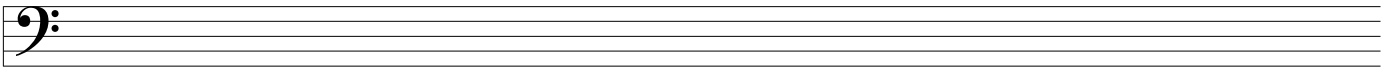


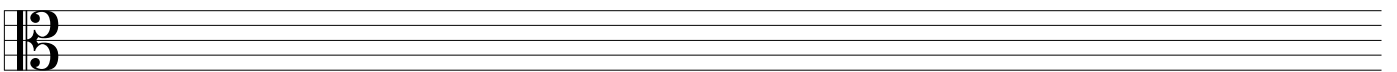
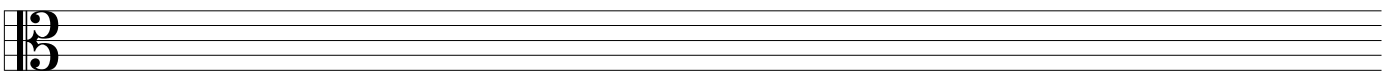
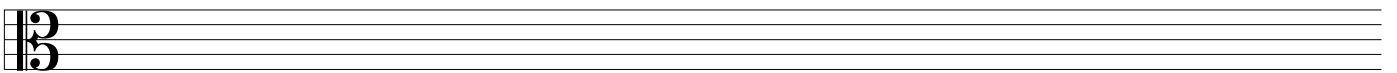
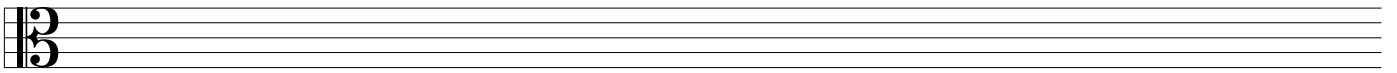
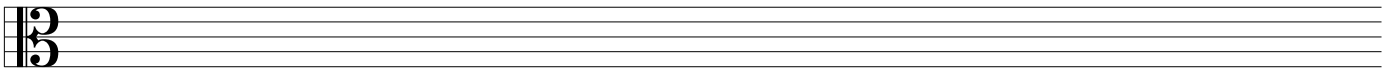
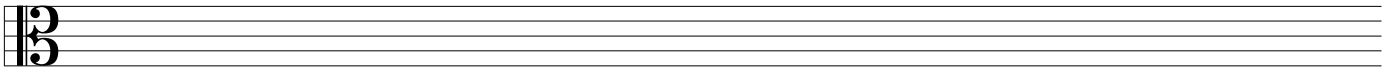
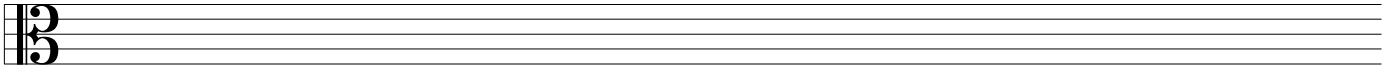
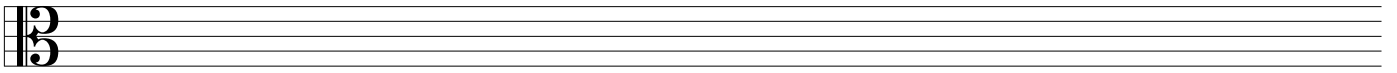
Notenpapier von **musikgrad.de**

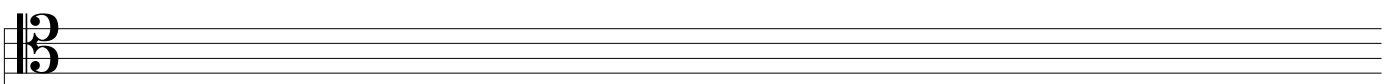
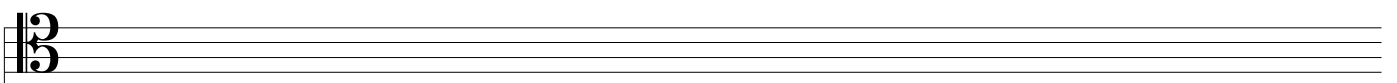
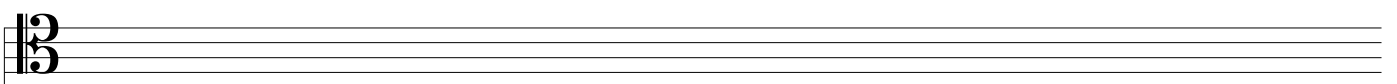
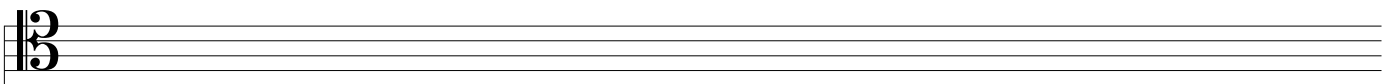
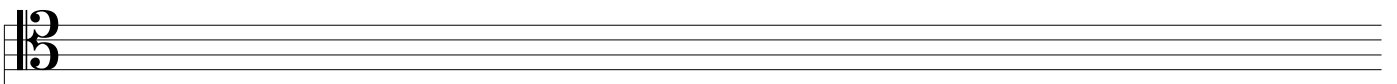
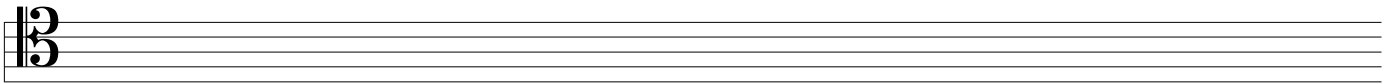
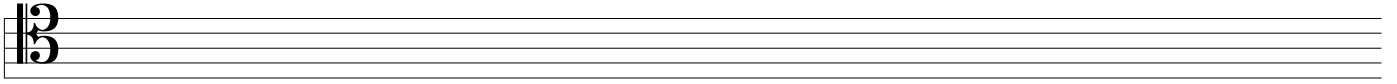
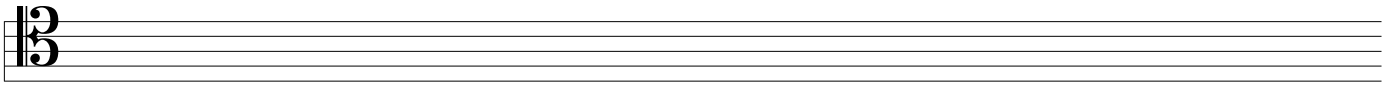
Type: Giant

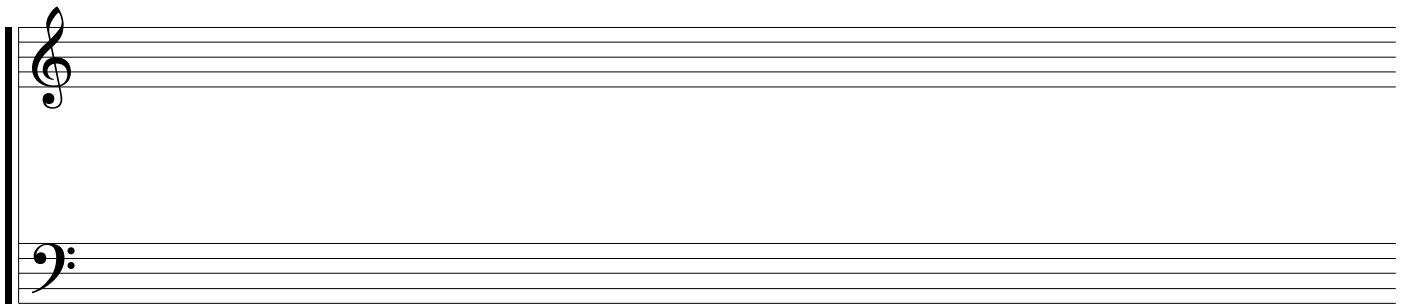
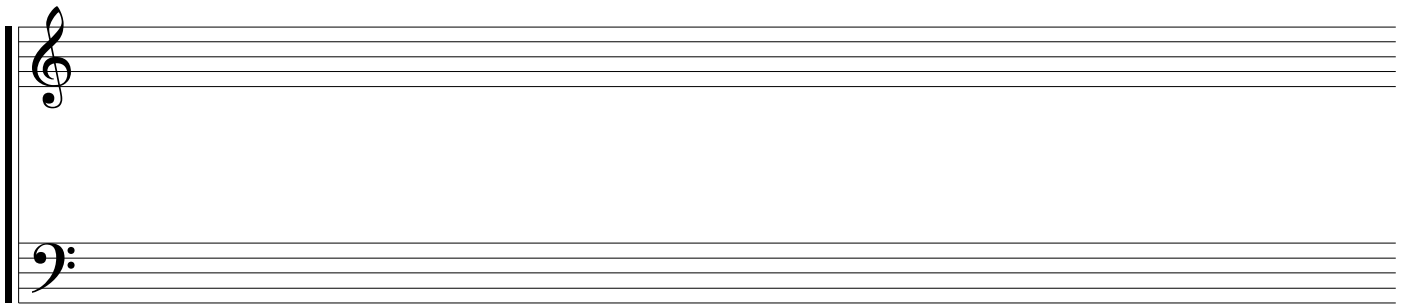
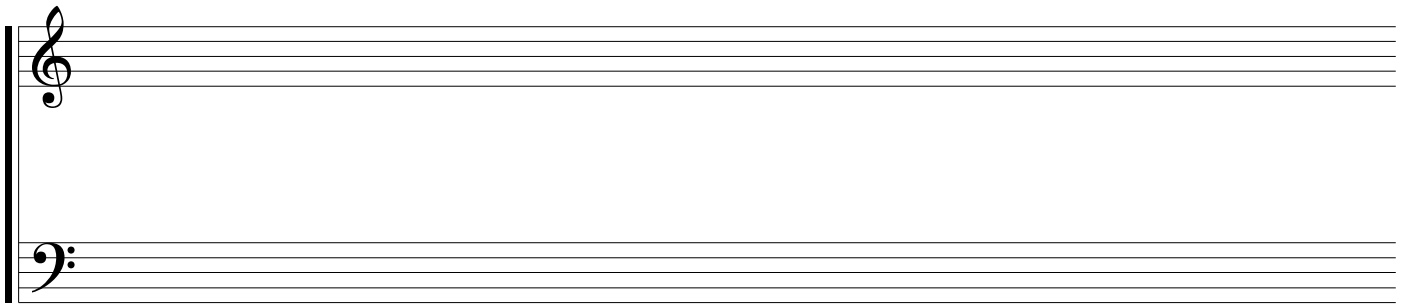
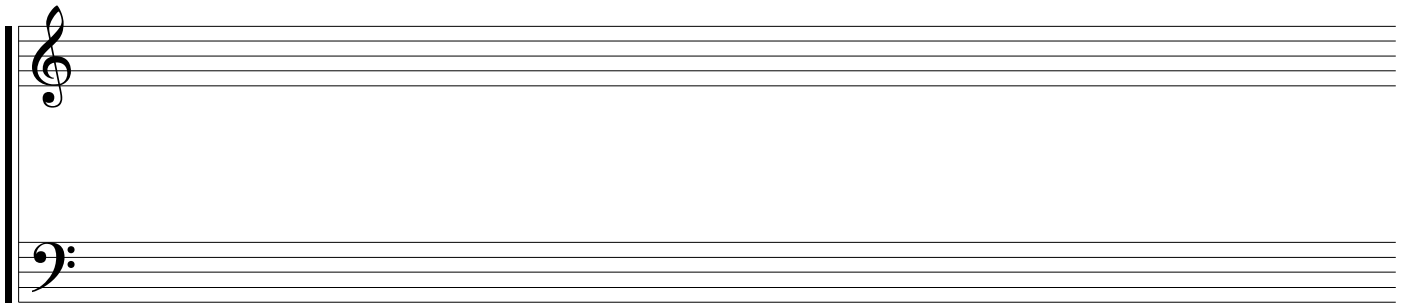










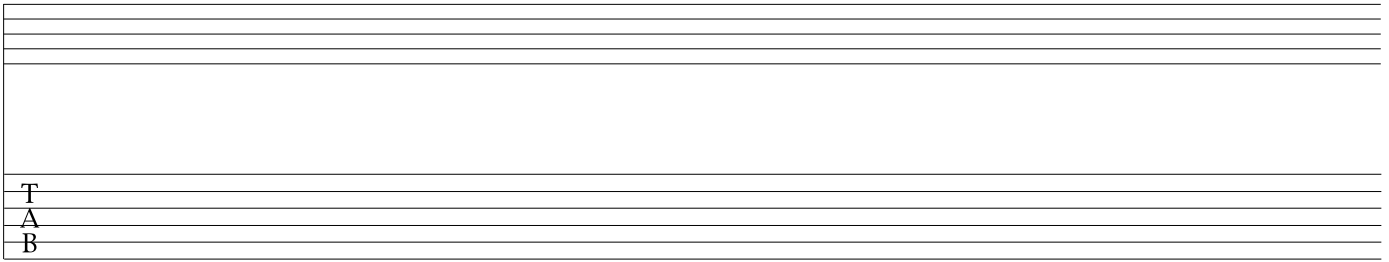


A musical staff system consisting of two staves. The top staff is a grand staff with five lines, and the bottom staff is a grand staff with five lines. A treble clef is positioned on the left side of the top staff, and a bass clef is positioned on the left side of the bottom staff. The staves are empty.

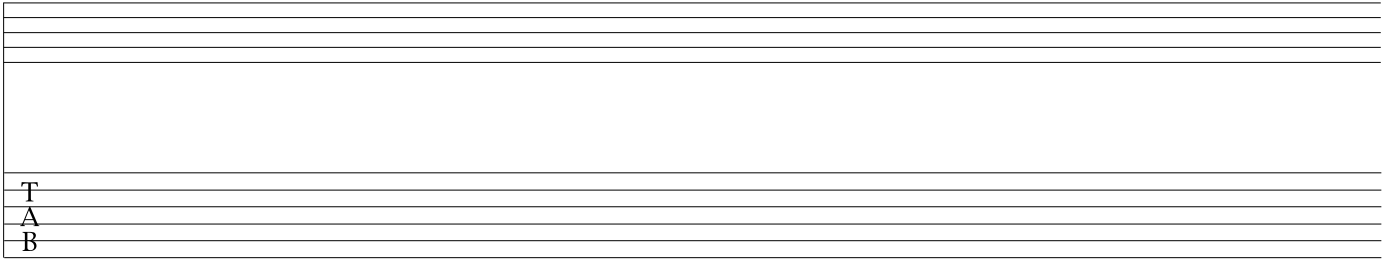
A musical staff system consisting of two staves. The top staff is a grand staff with five lines, and the bottom staff is a grand staff with five lines. A treble clef is positioned on the left side of the top staff, and a bass clef is positioned on the left side of the bottom staff. The staves are empty.

A musical staff system consisting of two staves. The top staff is a grand staff with five lines, and the bottom staff is a grand staff with five lines. A treble clef is positioned on the left side of the top staff, and a bass clef is positioned on the left side of the bottom staff. The staves are empty.

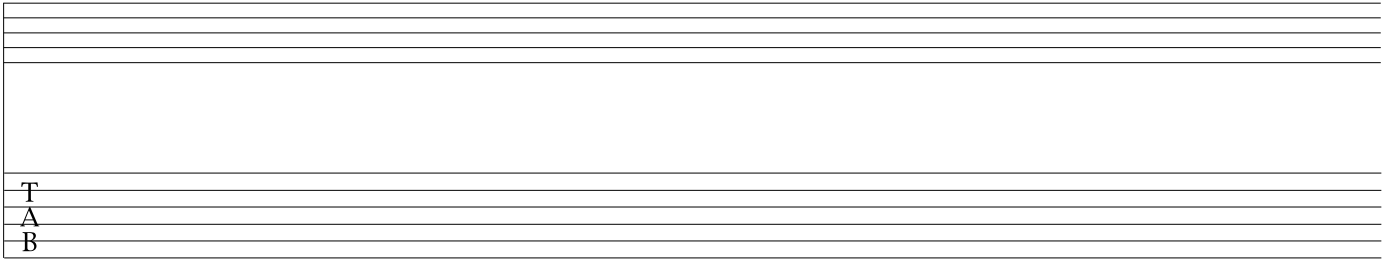




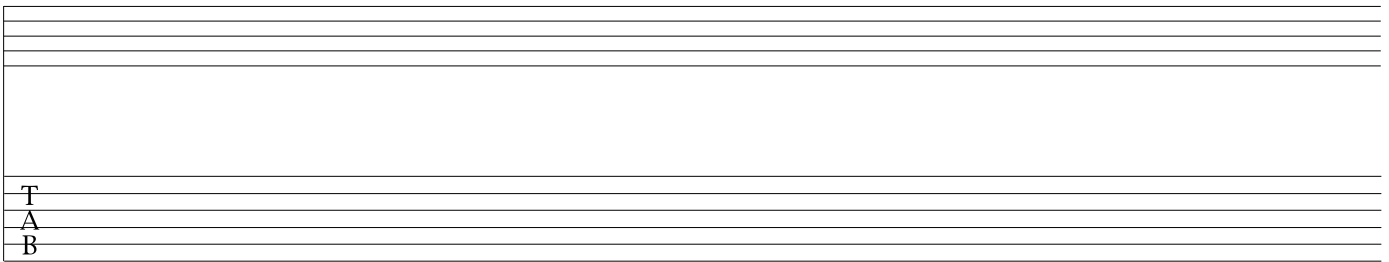
A musical staff system consisting of five horizontal lines. The top three lines are empty. The bottom three lines are labeled with the letters 'T', 'A', and 'B' stacked vertically on the left side.



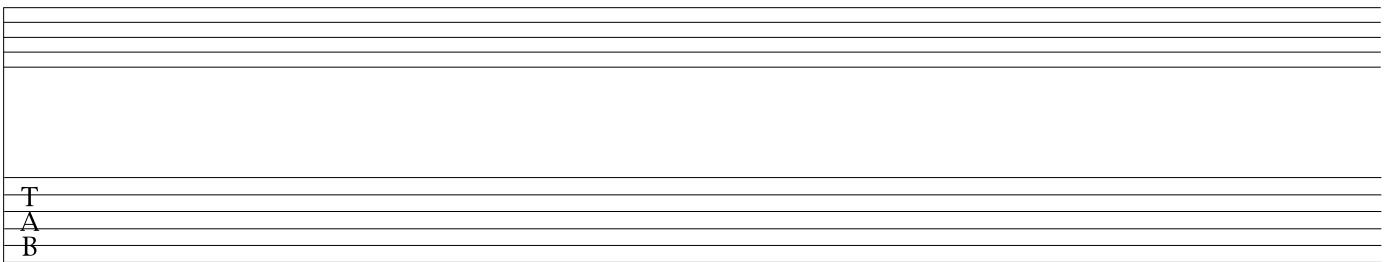
A musical staff system consisting of five horizontal lines. The top three lines are empty. The bottom three lines are labeled with the letters 'T', 'A', and 'B' stacked vertically on the left side.



A musical staff system consisting of five horizontal lines. The top three lines are empty. The bottom three lines are labeled with the letters 'T', 'A', and 'B' stacked vertically on the left side.



A musical staff system consisting of five horizontal lines. The top three lines are empty. The bottom three lines are labeled with the letters 'T', 'A', and 'B' stacked vertically on the left side.



A musical staff system consisting of five horizontal lines. The top three lines are empty. The bottom three lines are labeled with the letters 'T', 'A', and 'B' stacked vertically on the left side.

A musical staff system consisting of three staves. The top two staves are blank. The bottom staff has the letters 'T', 'A', and 'B' stacked vertically on its left side.

A musical staff system consisting of three staves. The top two staves are blank. The bottom staff has the letters 'T', 'A', and 'B' stacked vertically on its left side.

A musical staff system consisting of three staves. The top two staves are blank. The bottom staff has the letters 'T', 'A', and 'B' stacked vertically on its left side.

A musical staff system consisting of three staves. The top two staves are blank. The bottom staff has the letters 'T', 'A', and 'B' stacked vertically on its left side.

A musical staff system consisting of three staves. The top two staves are blank. The bottom staff has the letters 'T', 'A', and 'B' stacked vertically on its left side.

A musical staff system consisting of three staves. The top two staves are blank. The bottom staff has the letters 'T', 'A', and 'B' stacked vertically on its left side.