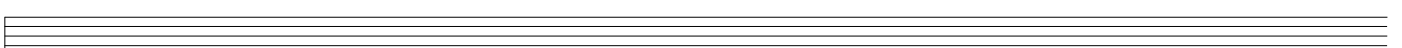
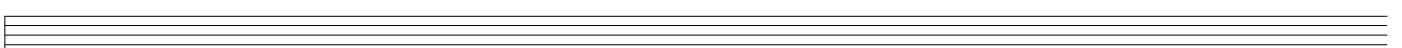
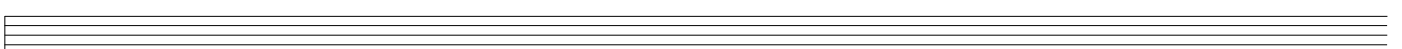
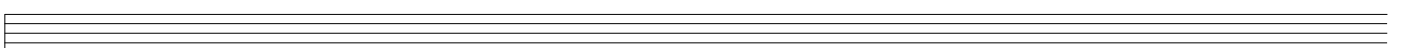
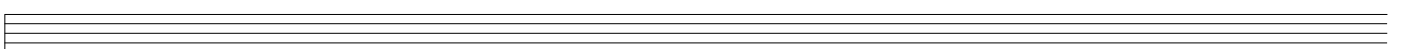
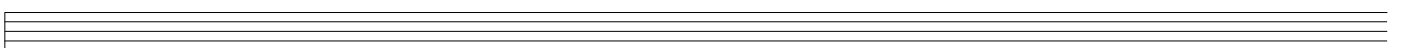
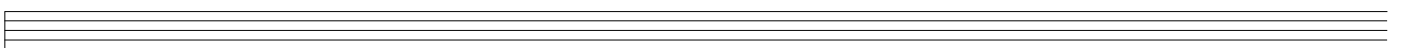
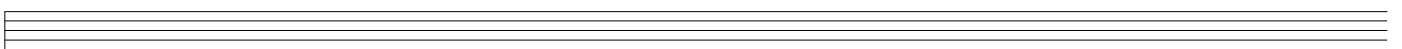
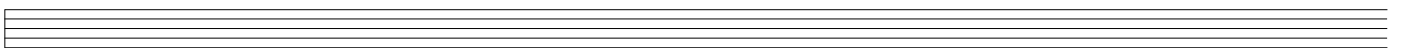
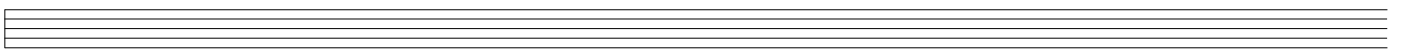
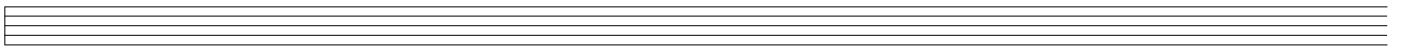
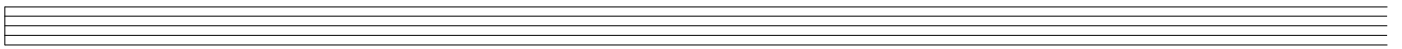
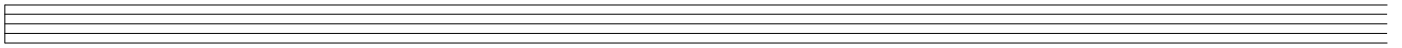
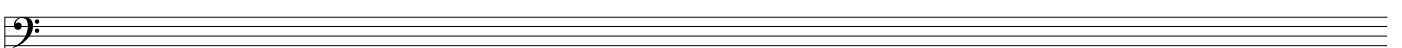
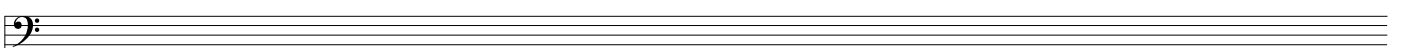
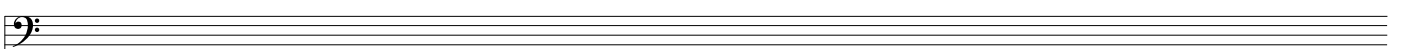
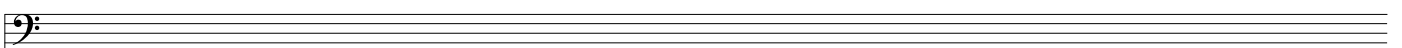
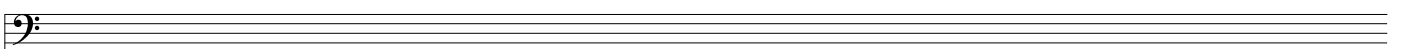
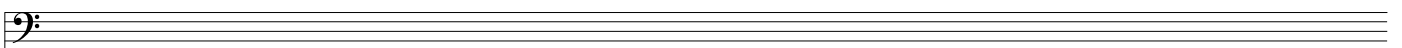
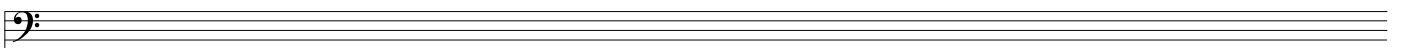
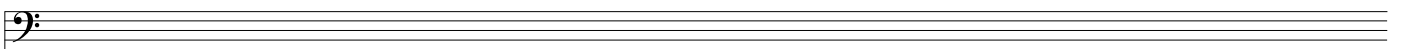
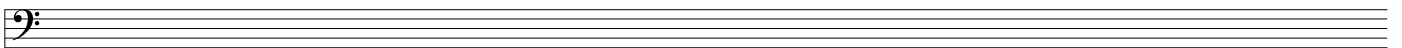
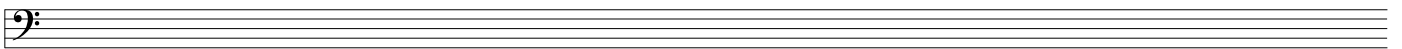
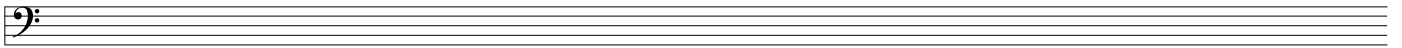
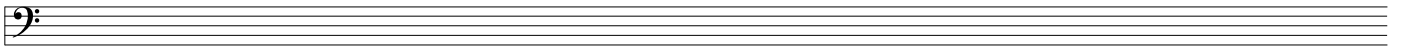
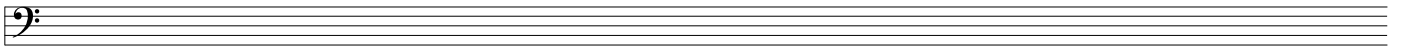


Notenpapier von **musikgrad.de**

Type: Kadenz

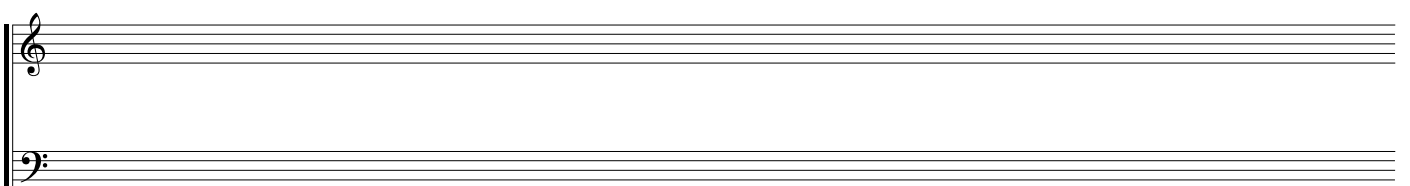
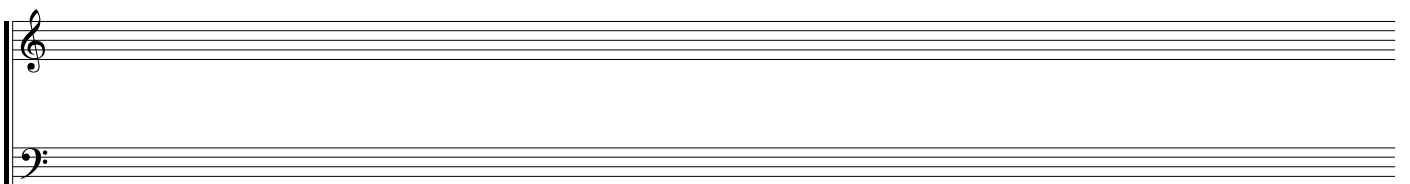
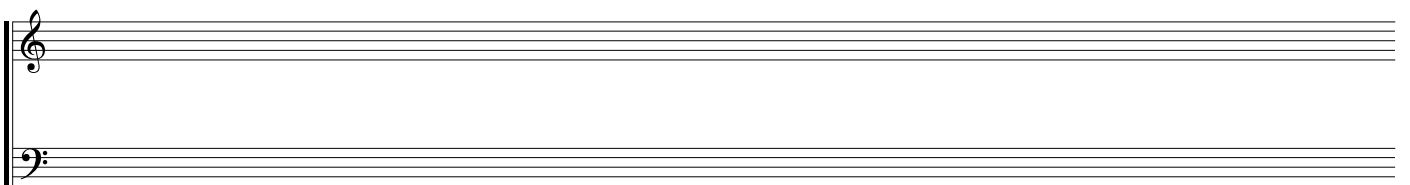
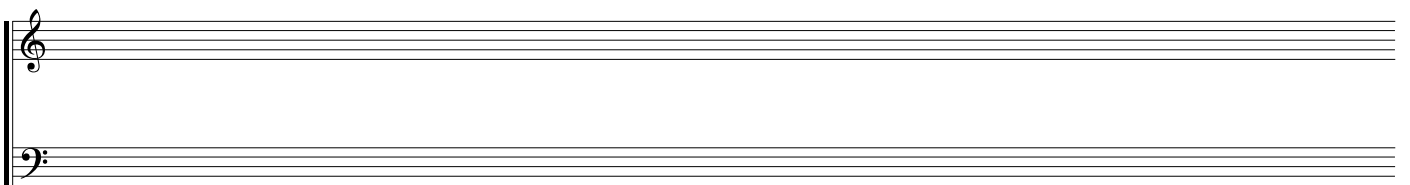
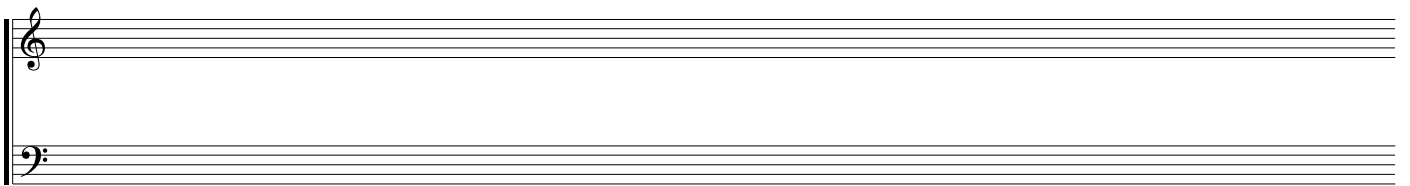
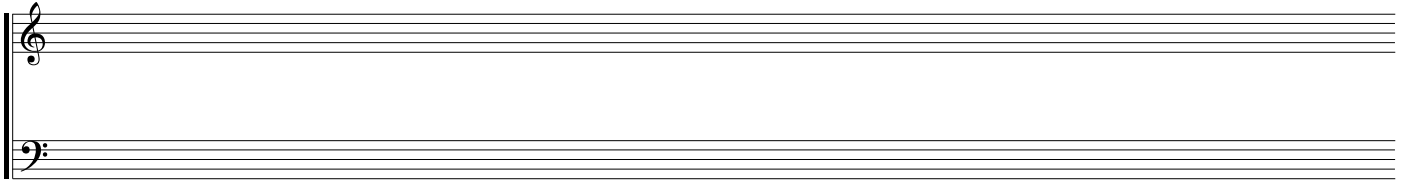
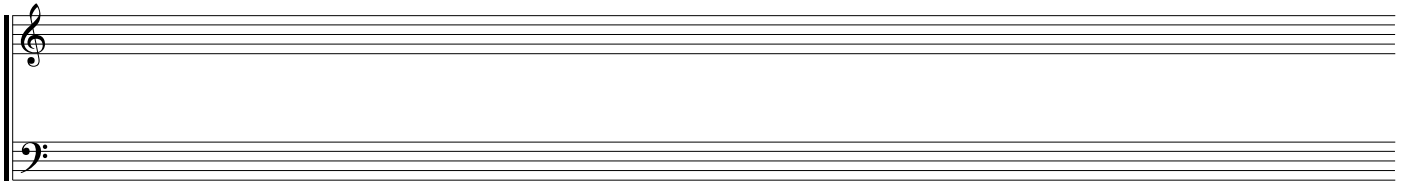


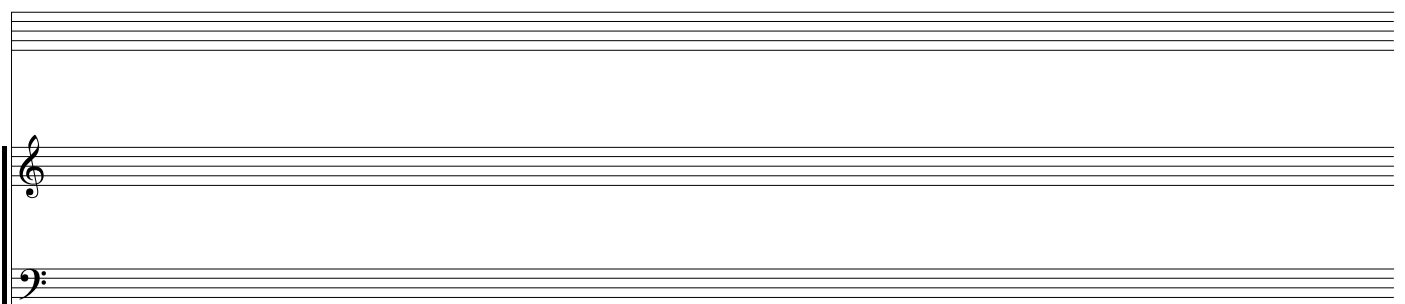
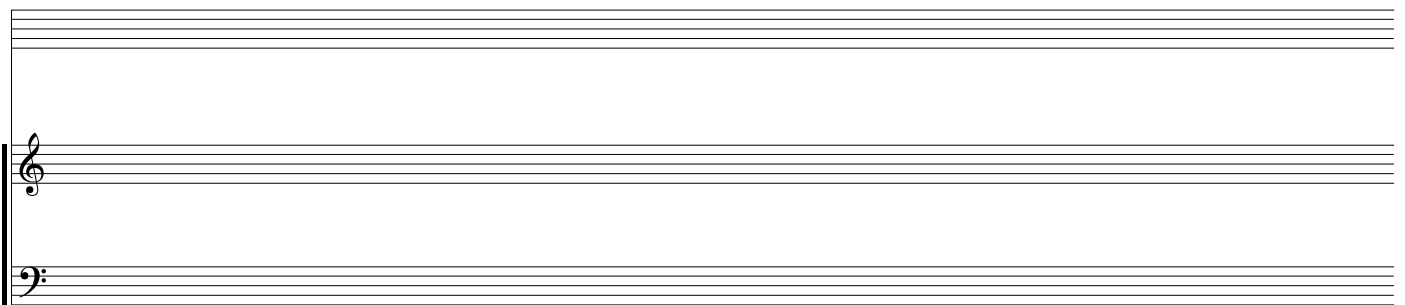
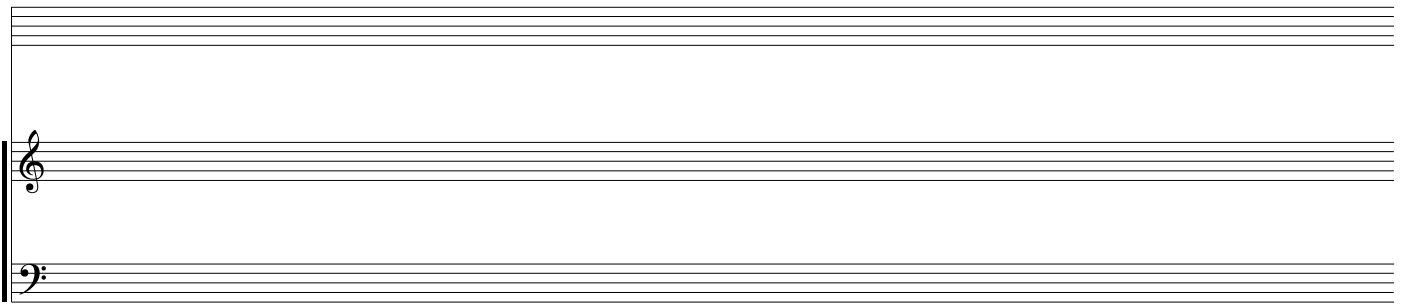
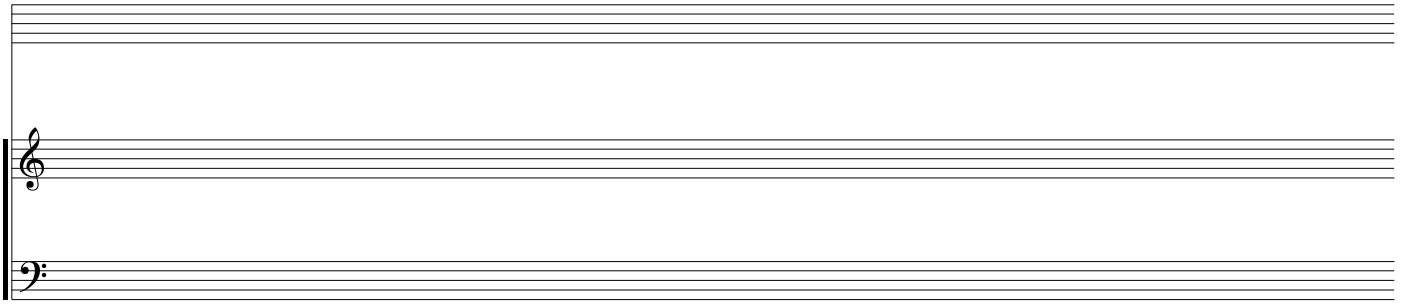
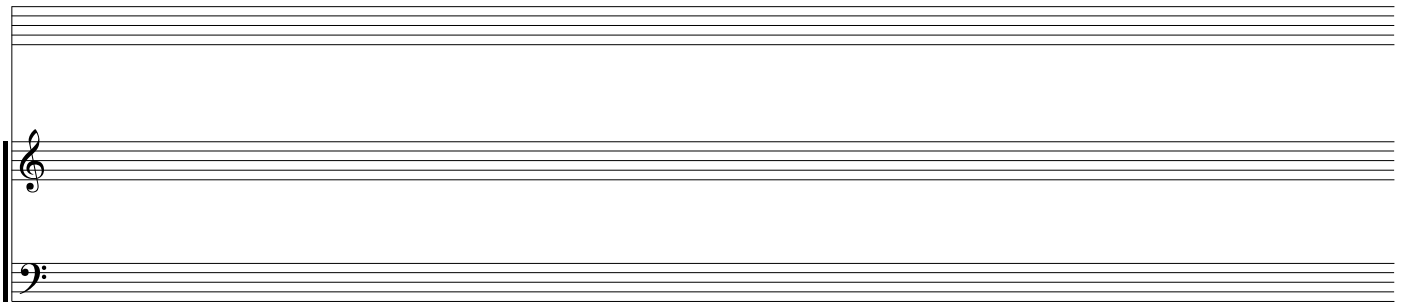




This image shows a page of 14 blank musical staves. Each staff is a five-line system with a treble clef (C-clef) on the first line and a 3/4 time signature. The staves are arranged vertically and are completely empty, intended for musical notation.

This image shows a page of 14 blank musical staves. Each staff is a five-line system with a treble clef (C-clef) positioned at the beginning. The staves are arranged vertically and are completely empty, providing a template for musical notation.





A musical staff system consisting of three staves. The top two staves are blank. The bottom staff has the letters 'T', 'A', and 'B' written vertically on its left side.

A musical staff system consisting of three staves. The top two staves are blank. The bottom staff has the letters 'T', 'A', and 'B' written vertically on its left side.

A musical staff system consisting of three staves. The top two staves are blank. The bottom staff has the letters 'T', 'A', and 'B' written vertically on its left side.

A musical staff system consisting of three staves. The top two staves are blank. The bottom staff has the letters 'T', 'A', and 'B' written vertically on its left side.

A musical staff system consisting of three staves. The top two staves are blank. The bottom staff has the letters 'T', 'A', and 'B' written vertically on its left side.

A musical staff system consisting of three staves. The top two staves are blank. The bottom staff has the letters 'T', 'A', and 'B' written vertically on its left side.

A musical staff system consisting of three staves. The top two staves are blank. The bottom staff has the letters 'T', 'A', and 'B' written vertically on its left side.

A musical staff system consisting of three staves. The top two staves are blank. The bottom staff has the letters 'T', 'A', and 'B' written vertically on its left side.

A musical staff system consisting of three staves. The top two staves are blank. The bottom staff has the letters 'T', 'A', and 'B' written vertically on its left side.

A musical staff system consisting of three staves. The top two staves are blank. The bottom staff has the letters 'T', 'A', and 'B' written vertically on its left side.

A musical staff system consisting of three staves. The top two staves are blank. The bottom staff has the letters 'T', 'A', and 'B' written vertically on its left side.

A musical staff system consisting of three staves. The top two staves are blank. The bottom staff has the letters 'T', 'A', and 'B' written vertically on its left side.

A musical staff system consisting of three staves. The top two staves are blank. The bottom staff has the letters 'T', 'A', and 'B' written vertically on its left side.

A musical staff system consisting of three staves. The top two staves are blank. The bottom staff has the letters 'T', 'A', and 'B' written vertically on its left side.

A musical staff system consisting of three staves. The top two staves are blank. The bottom staff has the letters 'T', 'A', and 'B' written vertically on its left side.

A musical staff system consisting of three staves. The top two staves are blank. The bottom staff has the letters 'T', 'A', and 'B' written vertically on its left side.

A musical staff system consisting of three staves. The top two staves are blank. The bottom staff has the letters 'T', 'A', and 'B' written vertically on its left side.